

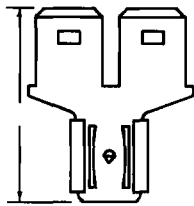
Special Devices



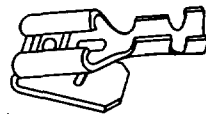
Tab Adapters, .250 x .032 (6,4 x 0,8)

Make two tabs from one when an add-on circuit is needed.
Material: .032 Brass

Part Number
MMFA
(MMFA also available as
.187 x .020 Tab Adapter —
Part Number MMFA-187)

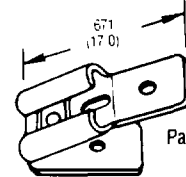


For Power Block 1/4" tab.
Bent back tab is for extra connection.



22-18 AWG Part Number PBT-4A
16-14 AWG Part Number PBT-4B

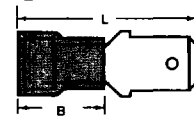
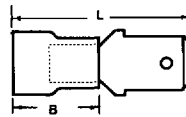
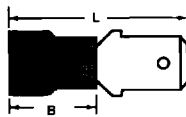
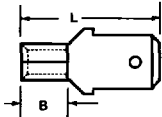
Two male blade angles: 10° bend-up;
120° bend-back; 1/4" blade width Converts
one Power Block 1/4" tab to two tabs.



Part Number
VWA-0

Male Quick Disconnects, .250 and .187 (6,4 x 4,7)

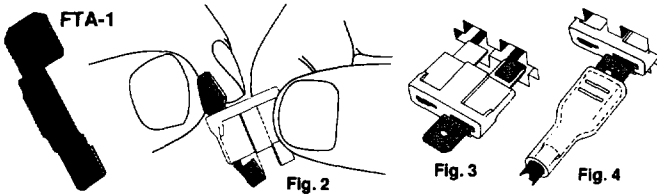
Material: Copper
Wire Range:
22-18, 16-14
and 12-10



	KRIMPTITE®				INSULKRIMP®				VIBRAKRIMP®				AVIKRIMP®			
	Economic-No Vibration Support				PVC Insulated with Funnel Wire Entry				Brass Sleeve Non-Funnel Vibration Support				Nylon Insulated with Vibration Support Funnel Ferrule Wire Entry			
AWG Wire Range	Max. Length L	Barrel B	Part Number	Max. Wire Insulation Diameter	Max. Length L	B	Part Number	Max. Wire Insulation Diameter	Max. Length L	B	Part Number	Max. Wire Insulation Diameter	Max. Length L	B	Part Number	
250 x .032	22-18	722 (18,3)	254 (6,5)	AMCT-1	.145 (3,7)	915 (23,2)	.450 (11,4)	AMCT-2X	.140 (3,6)	865 (22,0)	.393 (10,0)	AMCT-4	140 (3,6)	903 (22,9)	.438 (11,1)	AMCT-5
	16-14	722 (18,3)	254 (6,5)	MCT-1	.175 (4,4)	915 (23,2)	.450 (11,4)	MCT-2X	170 (4,3)	.865 (22,0)	.393 (10,0)	MCT-4	170 (4,3)	903 (22,9)	.438 (11,1)	MCT-5
	12-10	765 (19,4)	254 (6,5)	CMCT-1	250 (6,4)	106 (26,8)	.550 (13,9)	CMCT-2X	230 (5,8)	.102 (25,8)	.510 (12,9)	CMCT-4	230 (5,8)	.106 (26,8)	.550 (13,9)	CMCT-5
.187 x .020	22-18	.615 (15,6)	254 (6,5)	AMCT-17	.145 (3,7)	.820 (20,8)	.450 (11,4)	AMCT-27X	.140 (3,6)	.770 (19,5)	.393 (10,0)	AMCT-47	140 (3,6)	820 (20,8)	.438 (11,1)	AMCT-57
	16-14	.615 (15,6)	254 (6,5)	MCT-17	175 (4,4)	.820 (20,8)	.450 (11,4)	MCT-27X	170 (4,3)	.770 (19,5)	.393 (10,0)	MCT-47	170 (4,3)	820 (20,8)	.438 (11,1)	MCT-57

The part numbers in the shaded areas indicate standard/preferred products.

Fuse Tap Adapter



Now you can tap the hot side of flat automotive fuseblocks to add an additional circuit quickly and easily. Radios and other add-on accessories can be connected with little trouble or expense. Simply slip the bent end of the FTA-1 Fuse Tap Adapter over one leg (Fig. 2) of an ATC fuse and insert the fuse into

the hot side of the fuseblock. After insertion, the male tab will protrude from the fuseblock (Fig. 3). To tap into the block for a new circuit, simply slip a crimped fully insulated .250 female quick disconnect onto the tab (Fig. 4). That's all there is to it!

Battery Cable Lugs

Seamless Copper Lugs

Heavy duty closed end crimpable lugs designed for industrial, diesel, and marine applications. Manufactured of pure electrolytic copper, available for 6 AWG through 4/0 AWG wire and cable with a variety of stud sizes.



Part No.	AWG	Stud Size	Length	Width	Clearance
BCL-614	6	1/4	1.219	.438	.344
BCL-638	6	3/8	1.375	.594	.406
BCL-414	4	1/4	1.359	.517	.406
BCL-4516	4	5/16	1.359	.517	.406
BCL-438	4	3/8	1.359	.517	.406
BCL-2516	2	5/16	1.515	.609	.406
BCL-238	2	3/8	1.515	.609	.406
BCL-212	2	1/2	1.718	.750	.468
BCL-1516	1	5/16	1.562	.640	.406
BCL-138	1	3/8	1.562	.640	.406
BCL-112	1	1/2	1.750	.750	.468

Part No.	AWG	Stud Size	Length	Width	Clearance
BCL-10516	1/0	5/16	1.750	.718	.406
BCL-1038	1/0	3/8	1.750	.718	.406
BCL-1012	1/0	1/2	1.750	.718	.406
BCL-20516	2/0	5/16	2.000	.812	.500
BCL-2038	2/0	3/8	2.000	.812	.500
BCL-2012	2/0	1/2	2.000	.812	.500
BCL-30516	3/0	5/16	2.125	.890	.500
BCL-3038	3/0	3/8	2.125	.890	.500
BCL-3012	3/0	1/2	2.125	.890	.500
BCL-4038	4/0	3/8	2.265	1.015	.531
BCL-4012	4/0	1/2	2.265	1.015	.531